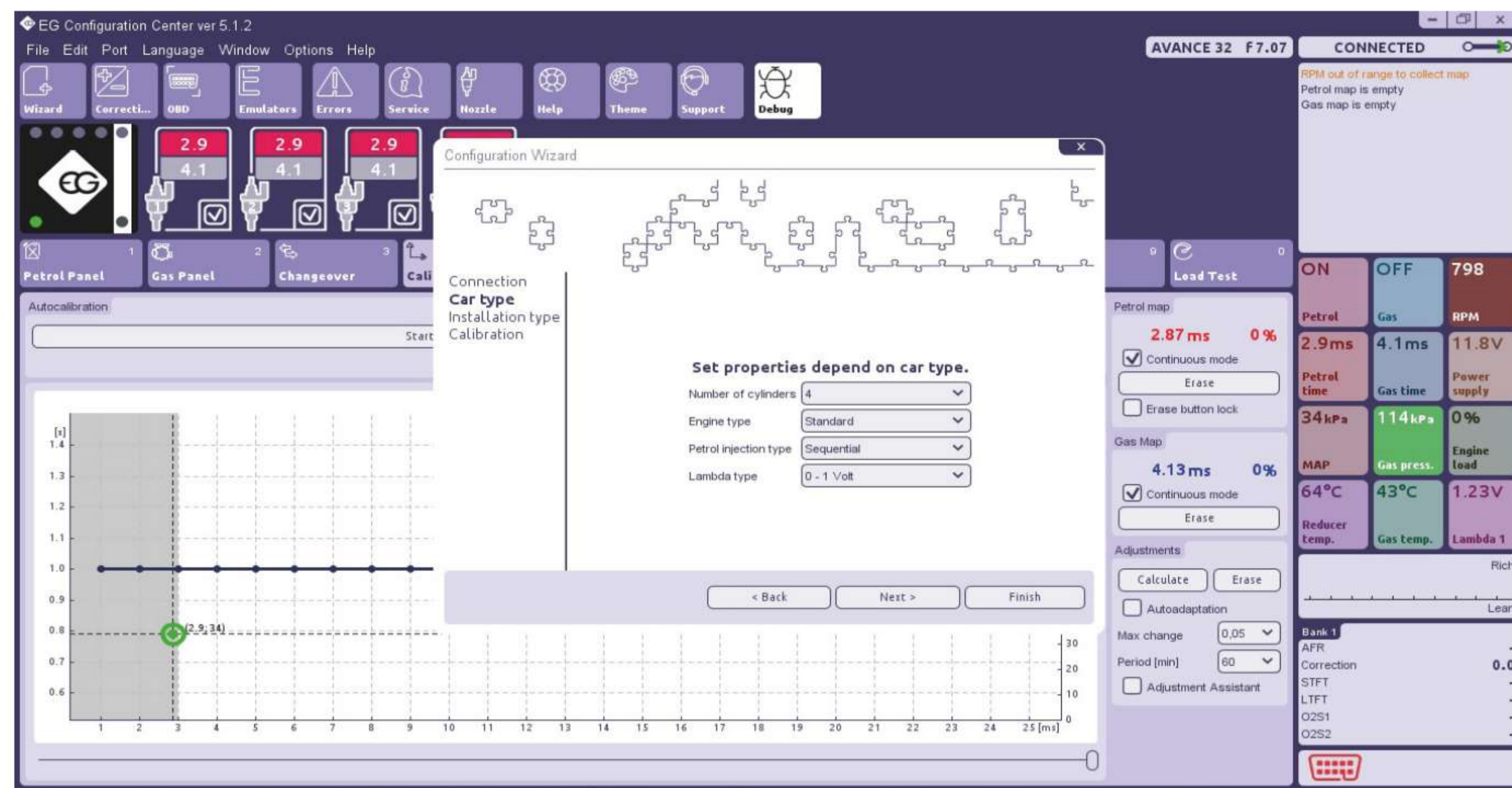


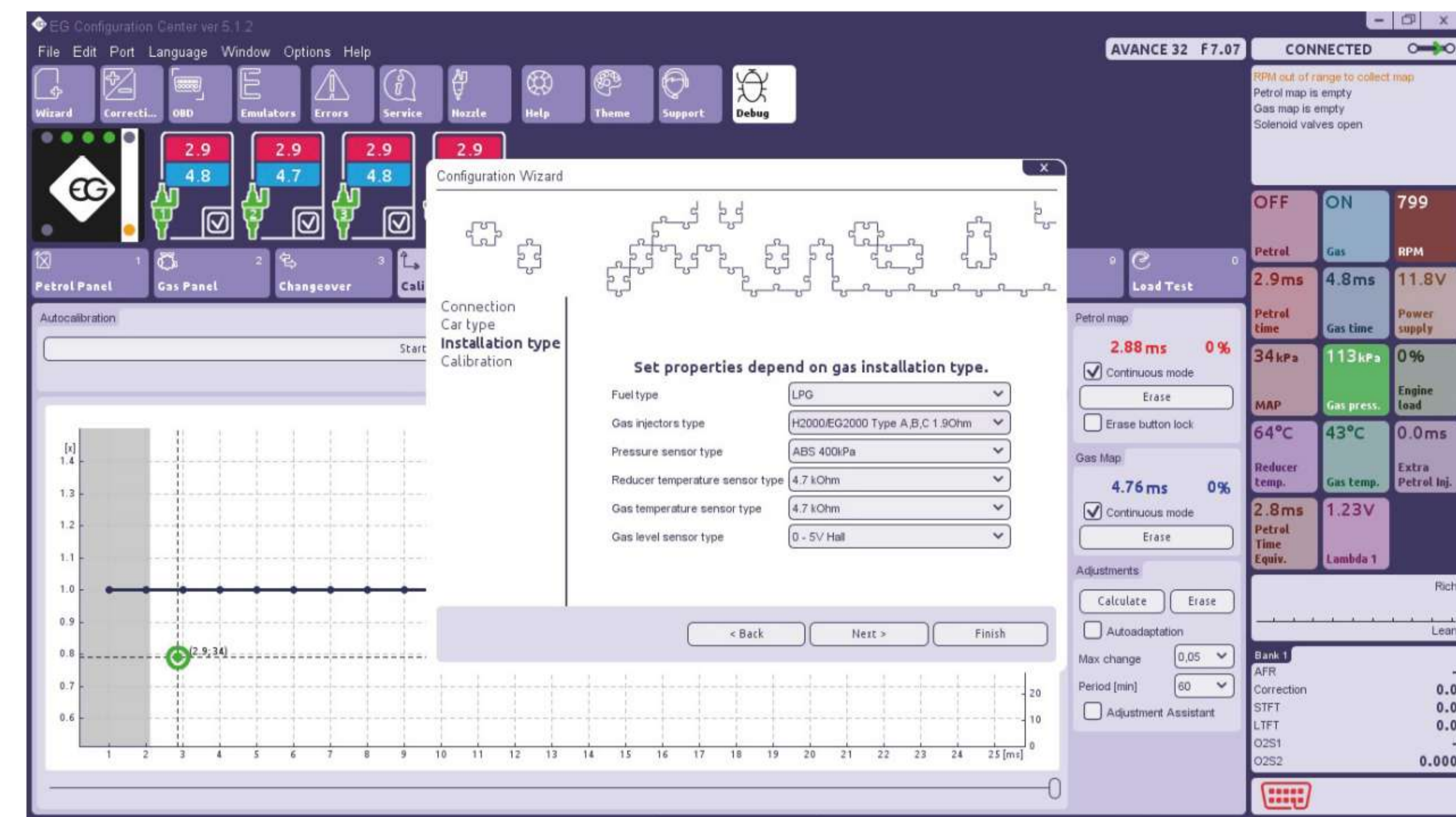
EG Configuration Center Quick Start Guide

1 - Car type



- 1 In **Number of cylinders** field please set number of cylinders in the car.
- 2 Set **Engine type**: STANDARD or TURBO to have proper vacuum range on the map.
- 3 For cars with injectors controlled by full group strategy (all injectors controlled by single signal) change the **Petrol injection type** from Sequential to Full group.
- 4 Set proper **Lambda sensor type**, if connected.

2 - Installation type



- 1 Set **Fuel type** on which car is running.
- 2 Select **Gas injectors type** installed in the vehicle.
- 3 **Pressure/Vacuum sensor type** ABS400kPa, **Reducer temperature sensor type** 4.7kOhm and **Gas temperature sensor type** 4.7kOhm are default set of sensors provided with the ECU. They are being set as default ones automatically. In case of using sensors different from standard ones please change sensor type in a proper field.
- 4 Select proper type of **gas level sensor/pressure gauge type** installed (0-5V Hall is default sensor provided with ECU)

3 - Calibration / RPM signal



- 1 Press **Autodetect** button in order to allow ECU to detect correct RPM signal divisor and threshold automatically. If RPM signal wire hasn't been connected anywhere it is possible to select Injector or OBD as RPM signal source.

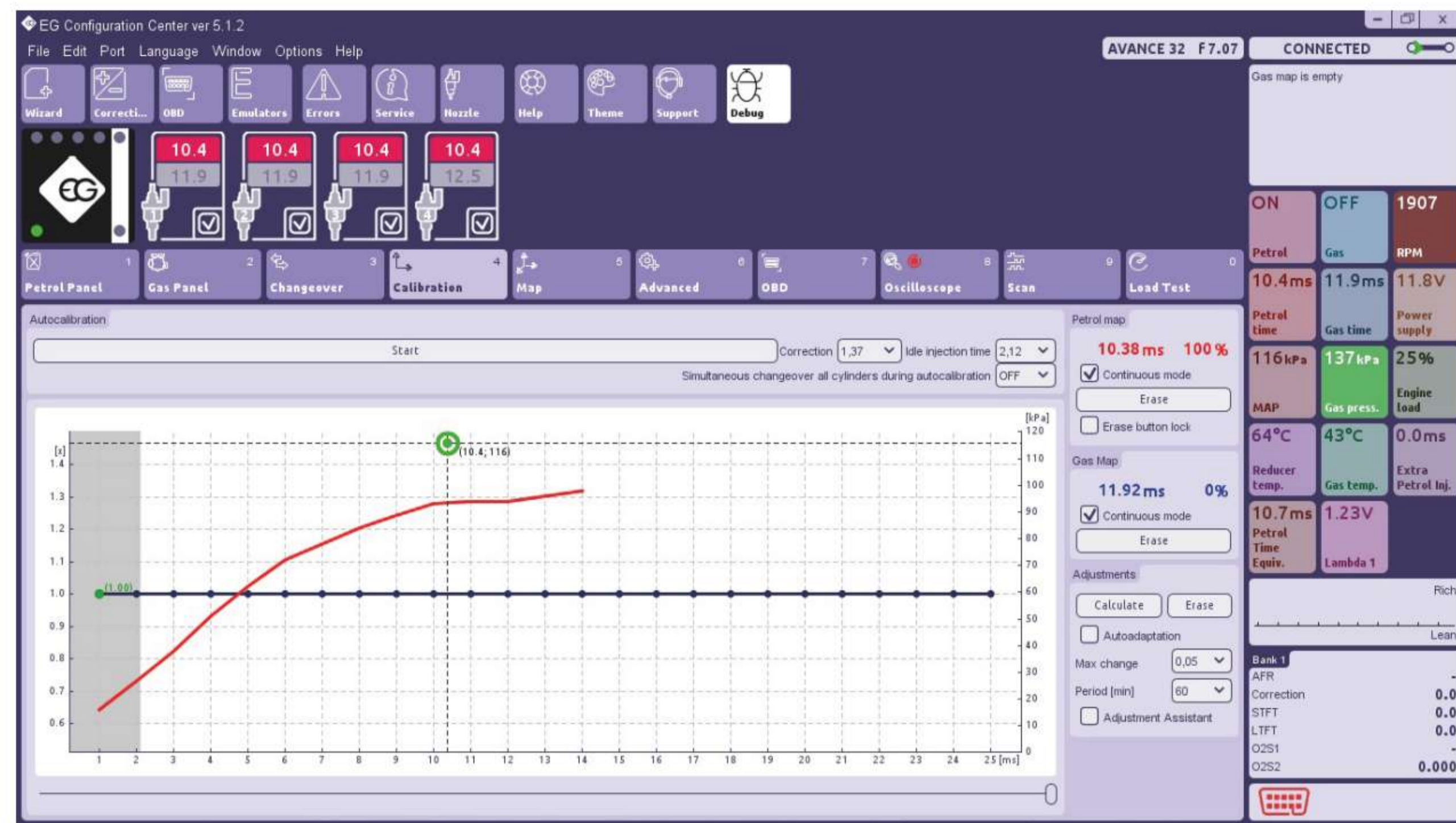
4 - Calibration / Autocalibration on idle



- 1 Wait for the reducer to reach temperature of 50 C degree. The engine should be running on idle revs, on petrol. Airconditioning must be turned off.
- 2 Press **Start** button to start autocalibration process. Read and follow instructions displayed by the software.
- 3 **Main Additive Correction [ms]** value after autocalibration should be within safe margins <0.5 ms – 2.5 ms>.

EG Configuration Center Quick Start Guide

5 - Calibration / Collect petrol map



1 Go for a test drive to collect petrol map (red colour) in full range of loads (drive until 100% of map will be collected).

6 - Calibration / Collect gas map



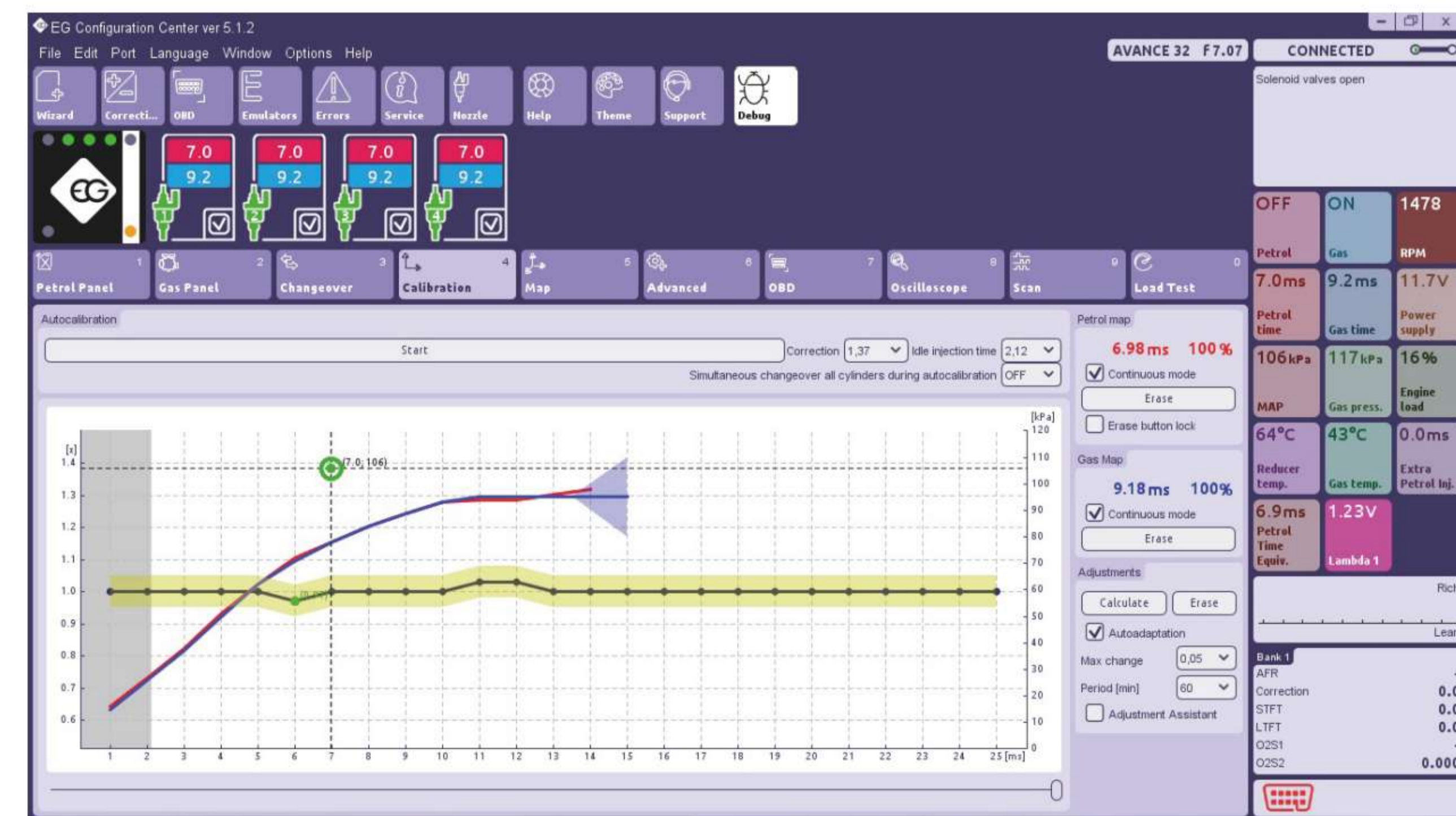
1 Go for a test drive to collect gas map (blue colour) in full range of loads (drive until 100% of map will be collected).

7 - Calibration / Calculate Multiplier Adjustments



- 1 If petrol and gas maps are not close enough to each other, press **Calculate adjustments** button to adjust multiplier line.
- 2 Press **Erase gas map** button and collect 100% of new gas map. Both maps should be close to each other now. You may also change multiplier manually if needed.

8 - Calibration / Enabling Autoadaptation



- 1 If maps are close enough to each other You may turn **Autoadaptation** feature ON to prevent them from growing apart.
- 2 If everything has been installed properly, 8 steps mentioned above should guarantee proper driving on both fuels. In some cases features located in „Map”, „Corrections”, Advanced” and „OBD” bookmarks should be used. To learn more details refer to the User’s Manual located in “docs” folder attached to the software (Press F1 button to open that folder).